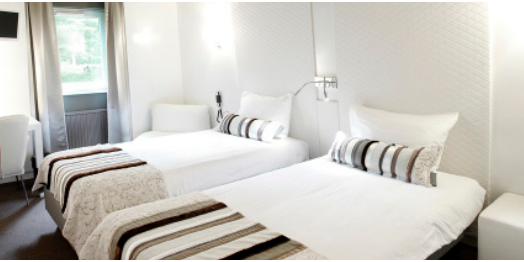


## Directions



### **A28 FROM UTRECHT TOWARDS AMERSFOORT/ZWOLLE**

on the A28, take exit 3 towards Zeist-Oost/Den Dolder  
turn left at the first traffic light  
at the end of the road (at the roundabout), take the second exit  
at the next roundabout, take the second exit  
you are now on the Woudschoten driveway

### **A28 FROM ZWOLLE/AMERSFOORT TOWARDS UTRECHT**

on the A28, take exit 3 towards Zeist/Den Dolder  
at the top of the exit, go right at the roundabout  
go straight on at the traffic lights  
at the end of the road (at the roundabout), take the second exit  
at the next roundabout, take the second exit

### **A12 FROM UTRECHT AND ARNHEM**

on the A12, take exit 20 towards Zeist/Driebergen  
at the end of the exit, continue towards Zeist  
once in Zeist, follow the signs towards Woudenberg, roughly  
3 kilometres at the fourth roundabout, take the second exit  
you are now on the Woudschoten driveway

## Public transport



The nearest train station is Driebergen Zeist. The current OV travel times can be found in the [travel planner 9292](#).

From Driebergen Zeist station bus line 381 of Syntus brings you to Woudschoten Hotel & Conference Center (direct, without transfer).

Times bus\*:

Departure: 6:42 AM	- arrival 7:07 am
Departure: 7:45 am	- arrival 8:12 am
Departure: 8:50 am	- arrival 9:15 am
Departure: 9:50 AM	- arrival 10:15 am

\* For exact times please refer to [9292.nl](#). Use as final destination Bushalte Woudschoten. It is about 5 minutes walk from the bus stop to our entrance.

**Schiphol Airport - Driebergen Zeist**  
A train goes directly every hour and every half hour.

From 7.00 am till 10.00 pm, from platform 3.

It is also possible to take the OV-fiets from Station Driebergen-Zeist. Cycling to Woudschoten Hotel & Conference Center takes approximately 15 minutes.